

CASE

**ACCESS CONTROL OF
CRANES TO
UNLOADING AREAS**

Steel Sector

MAIN BENEFITS OBTAINED

Cranes integrated to new logistic management system.

Safety improvement for crane operators, truck drivers and equipments, avoiding the unloading of steel coils by the cranes with the drivers inside the trucks.



CLIENT

Steel industry in Brazil.

WHEN

2021/2022

CONTEXT

Steel plant increased its production capacity, as long as its process of raw materials arrivals.

A new Logistic Management System (LMS) was implemented, to manage the incoming trucks with non-processed steel coils.

Need to integrate LMS with the cranes from the unloading areas, to avoid collisions between cranes and trucks.

CLIENT & CONTEXT

NEEDS &

CHALLENGES

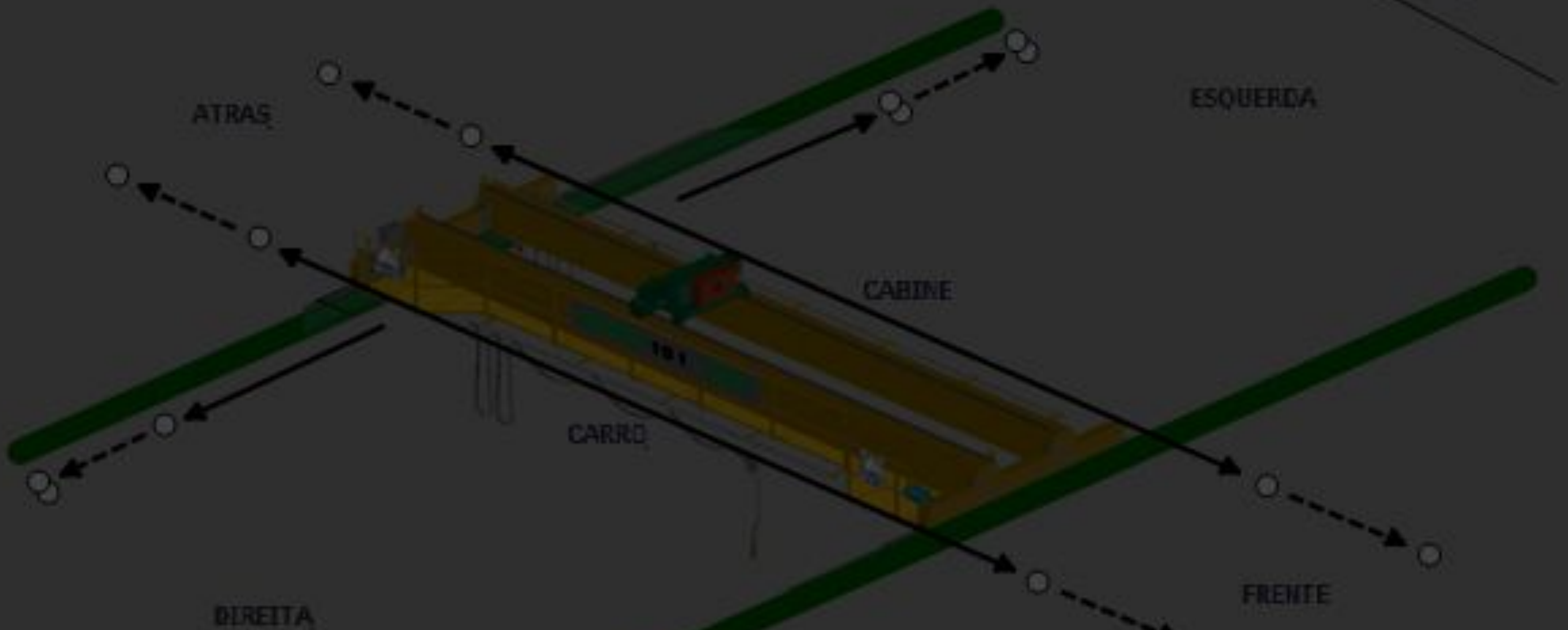


SAFETY, WITHOUT DISTURBING PROCESS WORKFLOW

Guarantee of safety perimeter around the unloading areas, without compromising the arrival schedule of raw materials.

Safe operational workflow among human operators and different equipments and controllers.

Communication between PLC's of different generations.

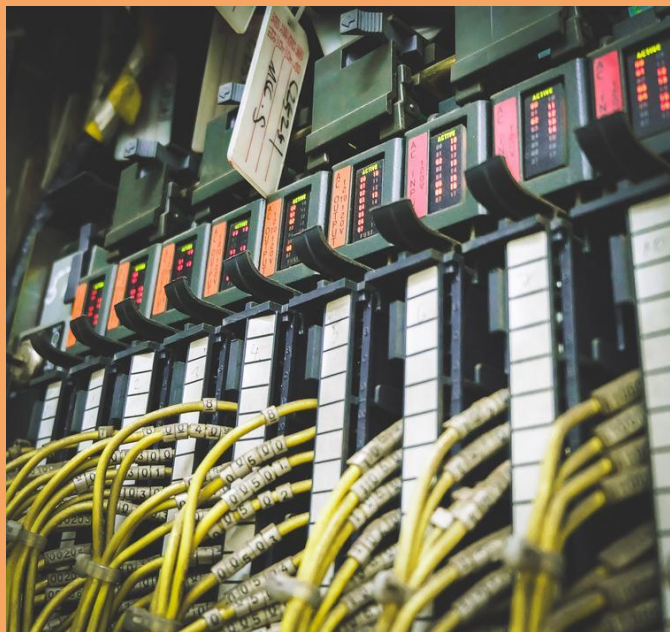


SOLUTIONS DELIVERED

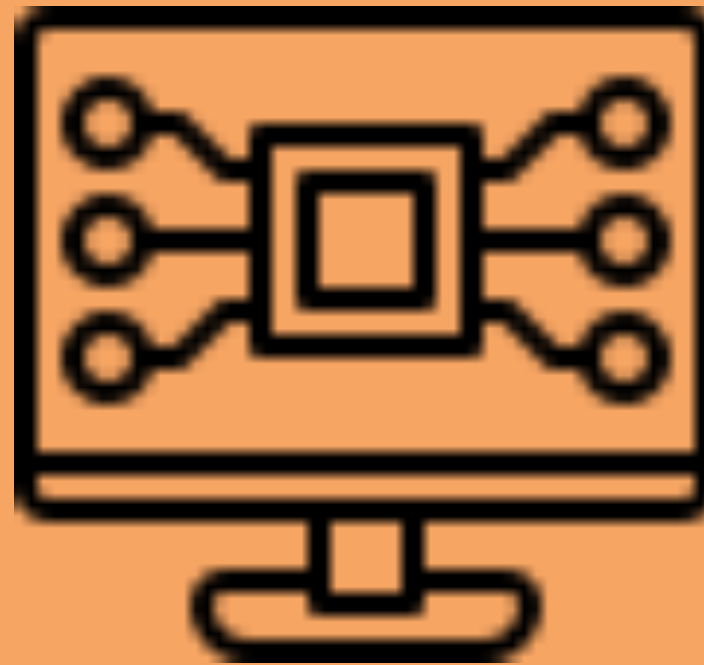
- Communication among Siemens PLC's through PUT/GET.
- PLC programming of operational workflow and integration between LMS + 2 cranes. Sensors & interlocks do not allow the entry of the cranes at the safety perimeter, during truck positioning.



SOLUTION DEPLOYMENT



**PROGRAMMING OF
SIEMENS PLC'S**



**SIMULATION &
VALIDATION**



**IMPLEMENTATION &
COMMISSIONING**

DELIVERABLES

- PLC PROGRAMS FOR 2 CRANES,
TESTED AND COMMISSIONED

- SOFTWARE DOCUMENTATION



Technologies & brands

- Siemens PLC's S7-300 and ET200SP.



WHERE ELSE CAN IT BE IMPLEMENTED?



All kinds of industries aiming to integrate its machinery to new equipments and systems, while preserving safety and reliability.

ADDRESS

Itajaí(SC), Brazil

WHATSAPP

+55 47 98858-2917

E-MAIL

challenges@ledefi.com.br



Please contact us to receive other cases that may be applied to your challenge.

WHAT IS YOUR

CHALLENGE?

